

FIRE PARADOX FUEL MANAGER

Identity card
 Leading Partner: P02-INRA
 Main WP involved: WP6.1
 Sub product of the Fuel Knowledge platform
 Delivery date: June 2008

FIRE PARADOX FUEL MANAGER (FPFM) is a key application in the fire modeling process with the following functionalities:

- Fuel manager: user friendly software for input files generation of fuel complexes for fire behavior models
- Fire effects visualisation on shrubs and trees
- Fuel succession visualisation after fire occurrence

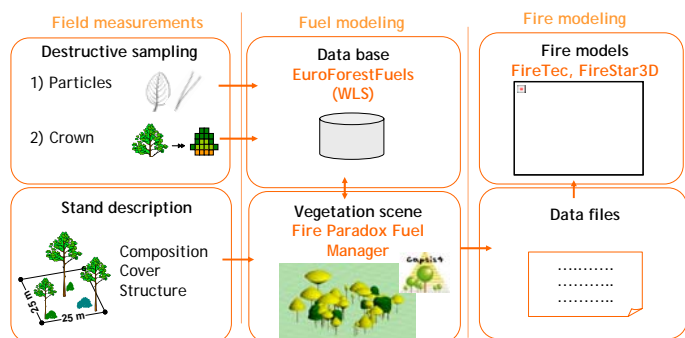


Fig. 1. FPFM in the fire modelling process

FPFM is a vegetation visualisation system coupled with a plant growth models thanks to **Capsist** platform.

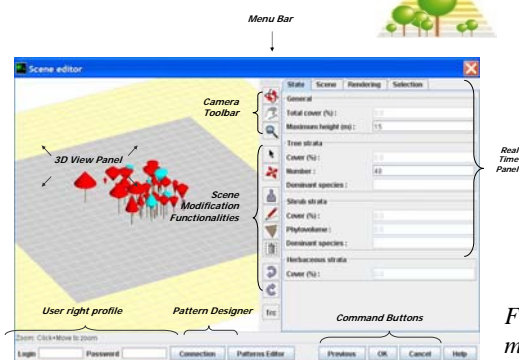


Fig. 2. FPFM main window

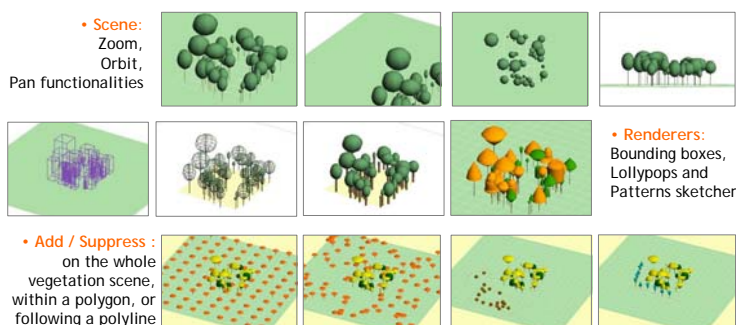


Fig. 3. 3D visualisation and vegetation objects management

Connection with database



Fig. 4. FPFM dialog with EuroForestFuel Data base

FPFM is remotely connected to EuroForestFuel data base currently located on P13-WLS servers in Switzerland, and in a near future on P05-EFI server in Finland as a service of the FireIntuition platform. A set of dialog windows have been implemented to manage the interactions between both applications.

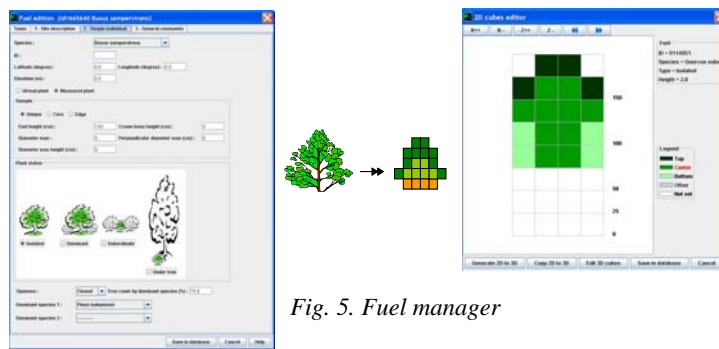


Fig. 5. Fuel manager

Fire effects visualisation

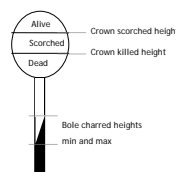
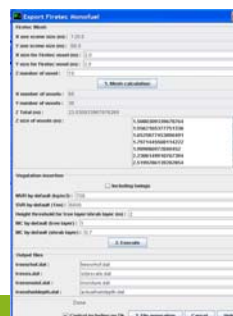


Fig. 6. Effect of fire visualisation

Fire model Export

Fig. 7. FIRETEC Export Interface



One of the main objectives of the FPFM is to automatically generate input files for 3D fire behaviour models from current vegetation scene.